



TAJ
DREAM OGLE

TAJ
'DREAM' Ogle
Luxury Condominium
Development

**GATED LUXURY CONDOMINIUM COMMUNITY
WALKABLE LIFESTYLE VILLAGE WITH EXCLUSIVE DINING,
SHOPPING, FIVE STAR HOTEL, MEDICAL & MORE**

Luxury Condominiums from USD \$250,000
OGLE, GEORGETOWN, GUYANA

OWNERSHIP DEPOSIT STRUCTURE



10%

RESERVATION AGREEMENT SIGNING



10%

FINAL PURCHASE & SALE AGREEMENT SIGNING



10%

CONCRETE FOUNDATION COMPLETION



20%

STRUCTURAL STEEL COMPLETION

AT THIS STAGE BUYERS CHOOSE **ONE OF TWO FINAL PAYMENT PATHS**



CONSTRUCTION COMPLETED ✓

**50%
PAYOFF**
RECEIVE TITLE

|
OR
|

**STRUCTURED
INSTALLMENT PLAN**
Developer in House financing
for the 50% balance. Low
monthly payments for up to 30
years.

SPECIALS

Limited Time Offer

USD 100,000 OFF

For All Guyanese Buyers

\$20,000,000 GYD

Applies to all residence types at TAJ Dream Ogle

This exclusive pre launch incentive is available to Guyanese nationals purchasing a residence at TAJ Dream Ogle.

Eligibility Requirements

- Must be a Guyanese citizen**
- Valid Guyanese ID or passport required**
- Reservation agreement and deposit must be completed**

Pre launch pricing and incentives are available for a limited time only.

Terms and conditions apply.





TAJ DREAM Ogle introduces a new standard of living in Guyana.

A walkable master planned residential and retail district where cafés, restaurants, boutiques, wellness spaces, and a vibrant central square are seamlessly connected to your home.

More than a condominium, TAJ Dream Ogle is an urban village inspired by Europe's most iconic walkable districts, designed for those who value energy, convenience, and elevated living.

U.S. designed and engineered to international standards, each residence features refined finishes, modern layouts, and long term durability rarely seen in the local market.

Located in the rapidly expanding Ogle corridor, TAJ Dream Ogle offers both an exceptional lifestyle and a strategic investment.

TAJ Dream Ogle is not simply a place to live.

It is where Guyana's next chapter begins.

Less Than 5 Minutes From:

Exxon Mobil's New HQ
Central Georgetown
Ogle International Airport
MovieTowne Mall
Giftland Mall





Every UNIT at TAJ DREAM OGLE Comes Fully Appointed

Included in Every Residence

Interior Features

- 10 Foot Ceilings
- Full-size washer and dryer
- Zoned split-system air conditioning for efficient climate control
- Recessed LED lighting throughout
- Tankless electric water heater for instant hot water and energy savings
- Designer textured wood-grain vinyl plank flooring – durable, elegant, and easy to maintain

Gourmet Kitchens

- Carrara marble countertops
- Upper and lower cabinetry with open shelving
- Stainless-steel sink with sleek modern fixtures
- GE appliance suite: refrigerator/freezer, range/oven, and built-in dishwasher
- Garbage disposal and under-sink basic water filtration system

Modern Bathrooms

- Spacious walk-in shower with tempered glass enclosure or curtain option
- Water-saving low-flow toilet and fixtures
- Wall-mounted mirrored cabinet for added storage

Secure Indoor Parking Garage

- 1 to 2 dedicated stalls per unit

Dual Elevator Service in Every building Wing

Each building features dual full-sized OTIS® elevators in every wing, ensuring fast, convenient, and reliable access to all floors.

Elevated Living, Built In

With timeless finishes and smart features throughout, every TAJ DREAM OGLE unit reflects a new standard for quality living in Guyana.



Life at TAJ Dream Ogle: Your Urban Village

TAJ Dream Ogle is more than a place to live, it's a fully integrated urban village where luxury residences meet vibrant open-air streets, landscaped courtyards, and outdoor dining at every turn.

Everything is within walking distance.

From a premium international market and an international five star hotel to chef driven restaurants, wine bars, artisan cafés, wellness studios, medical suites, beauty services, and everyday essentials.

Palm lined promenades, open air plazas, and landscaped courtyards create natural spaces to gather. Alfresco lunches, casual meetups, and evening strolls unfold effortlessly within a vibrant, pedestrian focused setting.

This is not simply a retail district.
It is an extension of your home.

At TAJ Dream Ogle, convenience, community, and lifestyle come together in one walkable, world class village.





TAJ Dream Ogle Amenities



Amenity Park and Open
Green Spaces



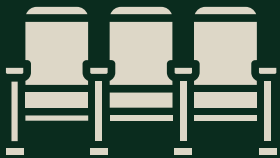
Walking Paths and
Social Lounges



Children's
Playground



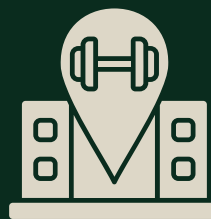
Outdoor BBQ & Dining
Pavilions



Private Residents Movie
Theater



NBA Size Basketball
Court



Signature Fitness
Center



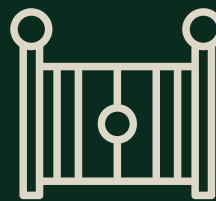
Resort Style Pool and
Pool Deck



Pickleball



Landscaped Courtyards
and Tree Lined Streets



Gated Access and 24
Hour Security



Tennis Court



Flexible Floorplans for Modern Lifestyles

Each residence features efficient modern layouts with dedicated garage parking and elevator access

1 Bed, 1 Bath - 436 SQ FT

1 Bed, 1 Bath - 459 SQ FT

1 Bed, 1 Bath - 523 SQ FT

1 Bed, 1.5 Bath - 603 SQ FT

2 Bed, 2 Bath - 597 SQ FT

2 Bed, 2 Bath - 850 SQ FT

2 Bed, 2 Bath - 1016 SQ FT

3 Bed, 3 Bath - 1185 SQ FT





Plans and Pricing

Residence Options at TAJ DREAM Ogle

1

ONE BEDROOM

Starting from
USD \$243,000

2

TWO BEDROOMS

Starting from
USD \$300,000

3

THREE BEDROOMS

Starting from
USD \$400,000

Exchange rate fixed at 1 USD equals 219 GYD

Pre launch pricing available for a limited time.



Optional Developer Leaseback Program

TAJ DREAM Ogle offers flexibility for both homeowners and investors, with payment plans and optional leaseback income program.

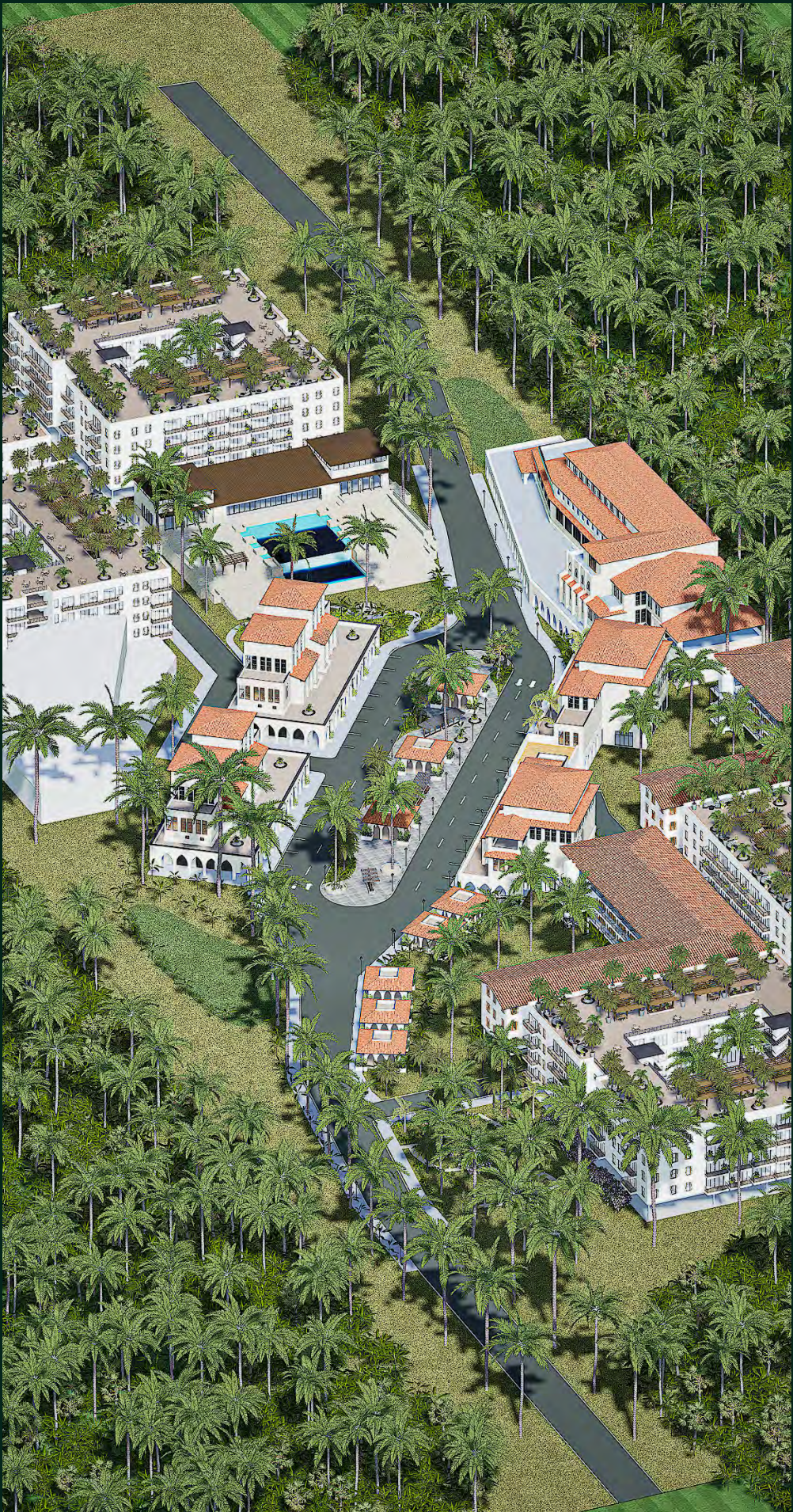
Optional Developer Leaseback Program

Once your unit is completed, the developer leases it back from you under a fixed agreement - then handles all subleasing, management, and maintenance.

- Developer Guaranteed 11% to 14% annual rental yield on purchase price*
- 1 to 10 year leaseback terms available
- Developer becomes your tenant - you collect rent, we do the rest
- Ideal for investors or absentee owners
- 100% hands-off, hassle-free income stream

Reserve Your Home Now with as Little as a 10% Refundable Initial Deposit.

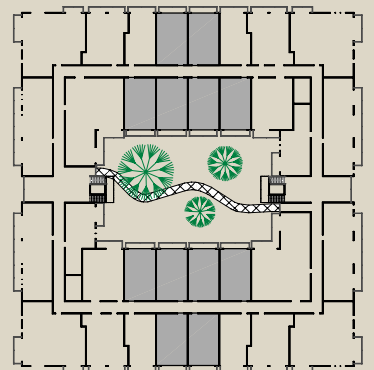
*depending on unit type and lease terms



ONE BED, ONE BATH



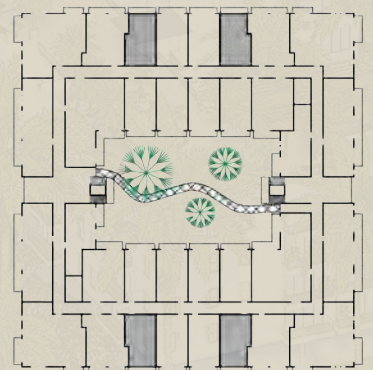
459 SF



ONE BED, ONE BATH



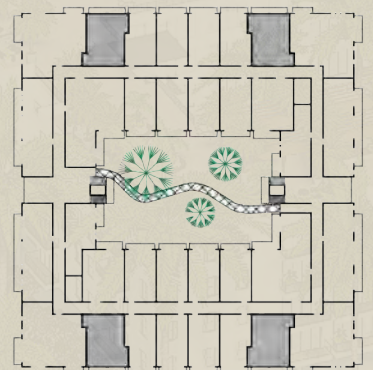
436 SF



TWO BED, TWO BATH



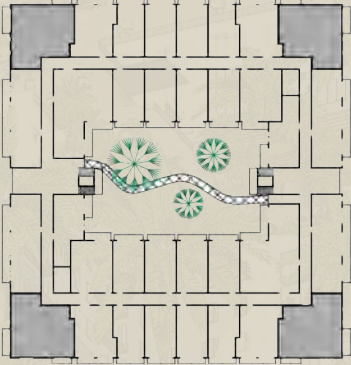
597 SF



TWO BED, TWO BATH



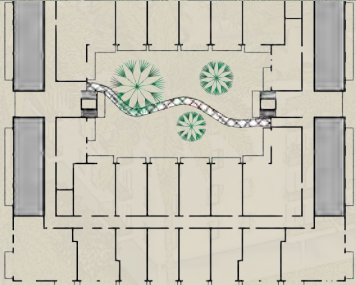
1,016 SF



TWO BED, TWO BATH



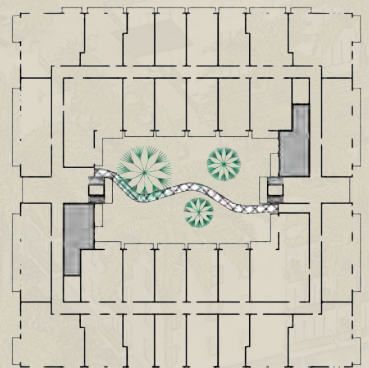
850 SF



ONE BED, ONE BATH



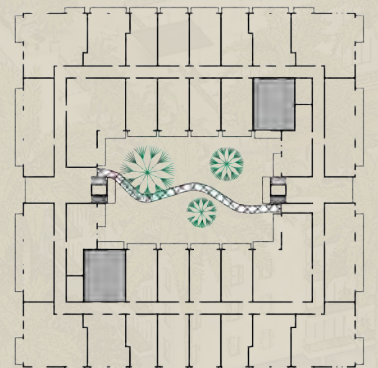
523 SF



ONE BED, ONE & A HALF BATH



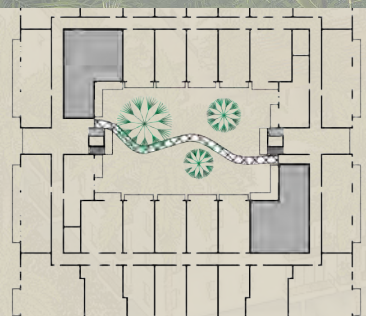
603 SF



THREE BED, THREE BATH



1,185 SF







Co-Developer and Strategic Brand Partner

A two-time NBA Champion, Finals MVP, League MVP, and 12-time All-Star, Hakeem Olajuwon was both dominant and dignified - admired for his skill, humility, and faith. After retiring, he transitioned into real estate and business, continuing to inspire as a symbol of excellence, discipline and vision beyond sports. He is the co-developer alongside Coastal Rim Properties, Inc

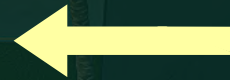




**TOWARDS OGLE
HIGHWAY**



**TOWARDS
SEAWALLS**



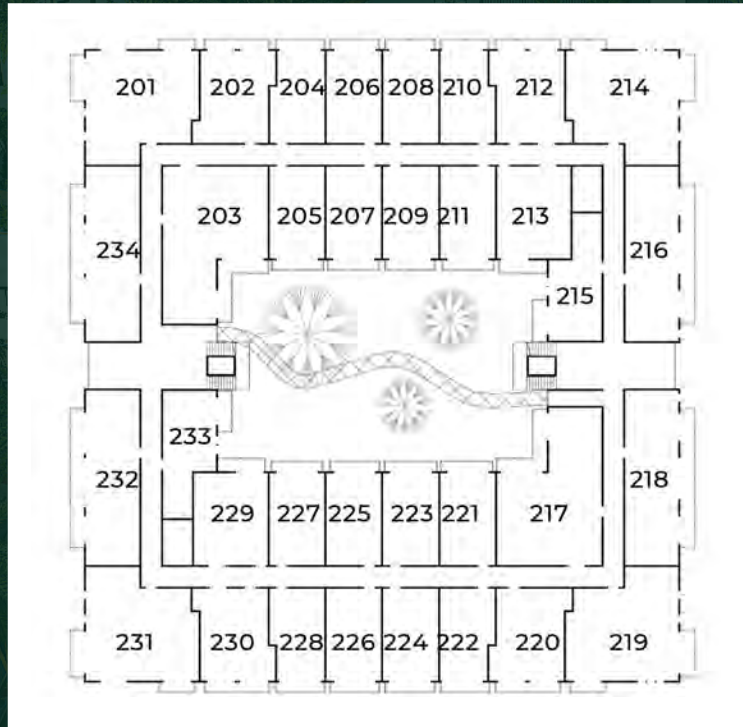
**SALES COMMENCE
FROM
BUILDING A & B**

- 34 Units per floor
- Ground Floor = Parking
- Units start from floor #2 hence unit numbers 201, 202, etc
- Floor 3 commences from Unit 301 (same layout)
- Floor 4 commences from Unit 401 (same layout)
- Floor 5 commences from Unit 501 (same layout) + easier roof access
- Be mindful of interior/exterior facing units

Based on your preference, choose Floor & Unit Number accordingly



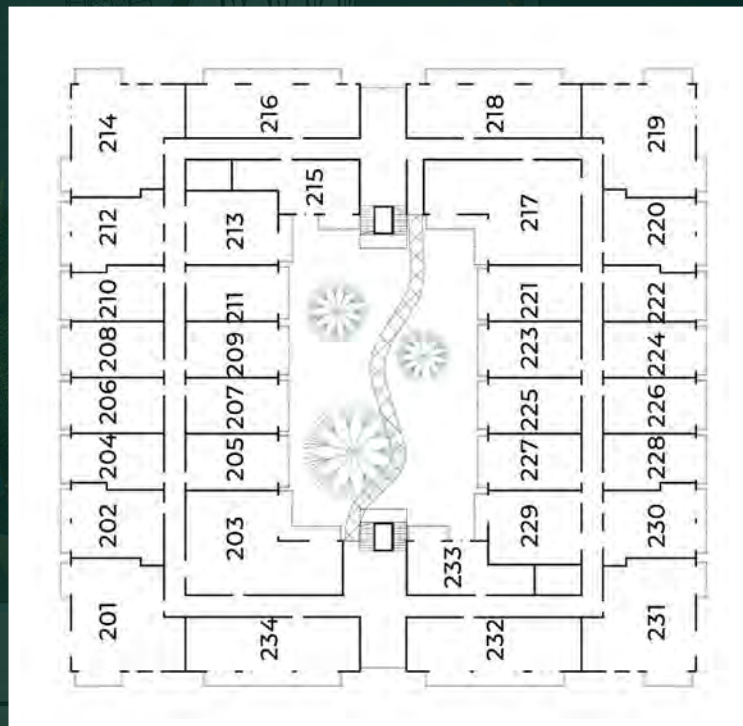
VIEW FACING POOL



BUILDING A



VIEW FACING BUILDING A



BUILDING B



Email:
sales@tajguyana.com

Call, Text or Whatsapp:
+592-702-1000

Website:
www.tajguyana.com



Scan QR code to
explore on our website